

THE UNIVERSITY OF  
**NEWCASTLE**  
AUSTRALIA



---

## centre of **excellence** for **equity** in higher **education**

Improving practice through  
collaborative research with care  
leavers in HE

## Out of Home Care and Higher Education

- OOHC - Placement of a child or young person with alternative carers other than their parents (e.g. foster, kinship or residential care)
- Care leavers less likely to engage in higher education:
  - Estimated rates of HE completion as low as 1%
- More likely to experience negative outcomes:
  - High un- and under-employment
  - High rates of homelessness

# The Live, Learn, Grow program

- On-campus support – the ‘Navigator’
- Agency partnerships
- Community engagement
- Research & evaluation

## This project

- Series of workshops with current students from care backgrounds
- Co-designed and student led
- Exploring experiences of being in care, particularly in relation to education

# What Did We Need to Make it Work?

- Time & Space
- Relationships
- Collaboration
- Co-design



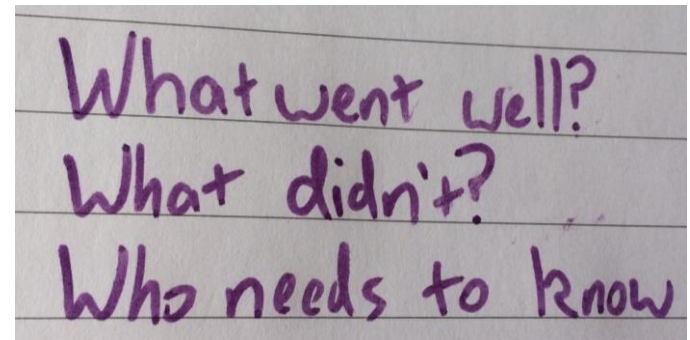
## Outcomes so far

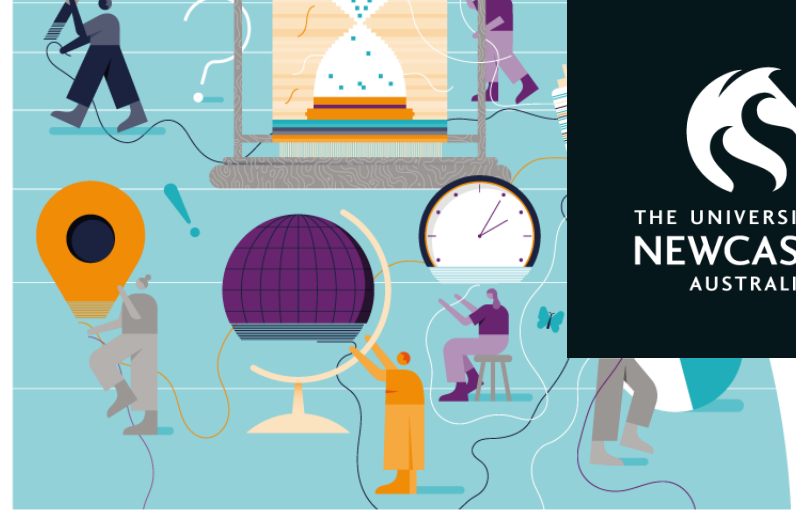
Planning workshops for OOHC sector

Students actively and independently engaging with research and policy

Using critical analysis skills in other areas

Feedback and suggestions for LLG





THE UNIVERSITY OF  
**NEWCASTLE**  
AUSTRALIA



---

# Thank you

[emily.fuller@newcastle.edu.au](mailto:emily.fuller@newcastle.edu.au)